



Introducing The E2

Enabling Smart Electric Urban Ride Hailing & Delivery



Why Choose The E2

- Cost of ownership/operation at **least 50% lower than similar fuel car**
- **Unlimited range** with battery swapping
- **Built for fleet use**; managed by smartphone
- Designed to be easily locally assembled via SKD
- Lowest tariffs/duties as a **L7e category EV**



V2V / V2X charging capabilities

Key Highlights

- Dual battery system with **440 Km** range (310 Km built-in + 130 Km swappable batteries)
- Multi-camera system for exterior and interior monitoring & safety
- **4 comfortable seats:** split rear seats fold down individually for extra storage
- Large driver display & infotainment screen with screen mirroring
- Comes standard with convenient driver accessories like hone holder & multiple USB charging ports



Dimensions & Form Factor

- Minimum ground clearance $\geq 250\text{mm}$, ensuring excellent maneuverability off-road and on uneven terrain
- Ideal wheelbase & track width for urban maneuverability - (**2000mm x 1300mm**)
- Tire specification: **155/50R14** (Standard), **165/55R13** (Optional)
- Curb weight: **680KG** (with built-in battery)



Images are intended to show real-life size comparisons

Vehicle

Performance

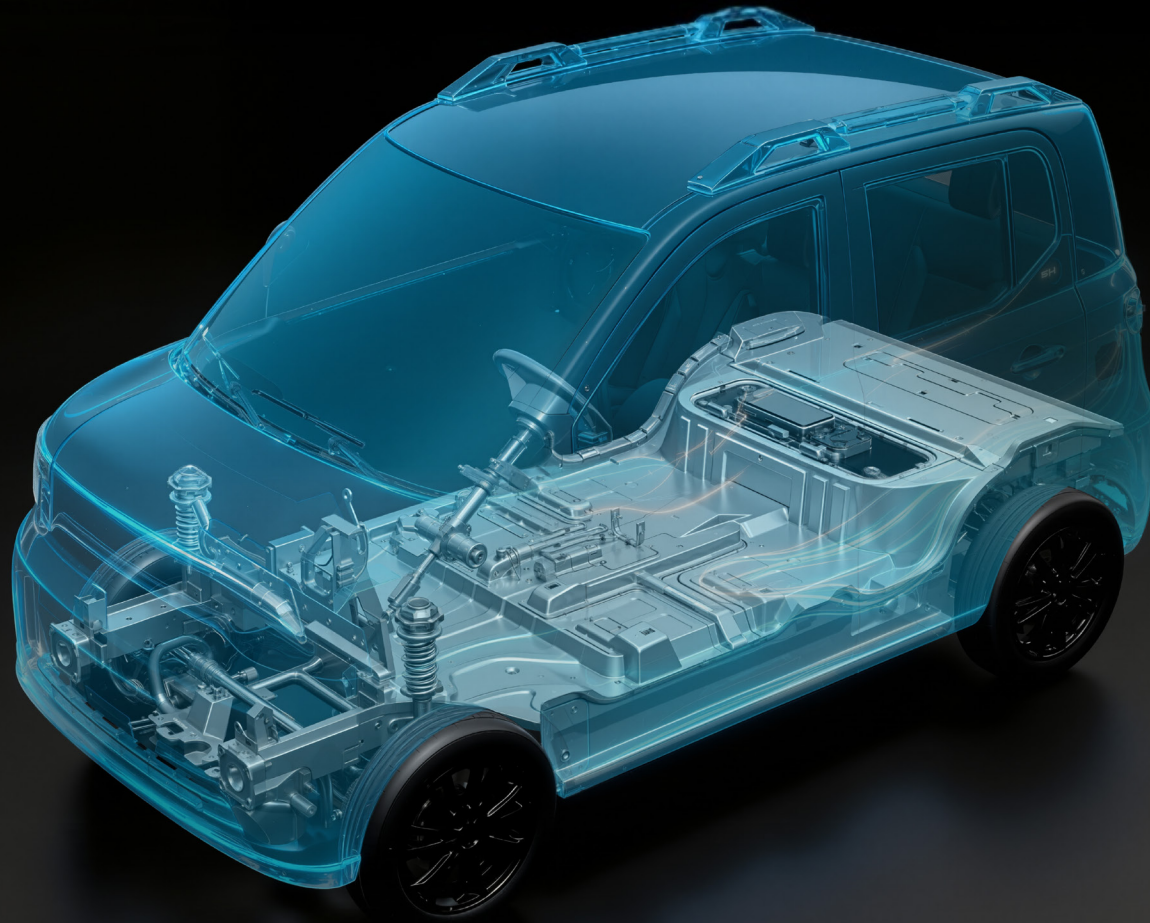


- Top Speed: **90 Km/H (0-40 Km/H In 6.0 Seconds)**
- **P67** water-resistance on all components to increase longevity

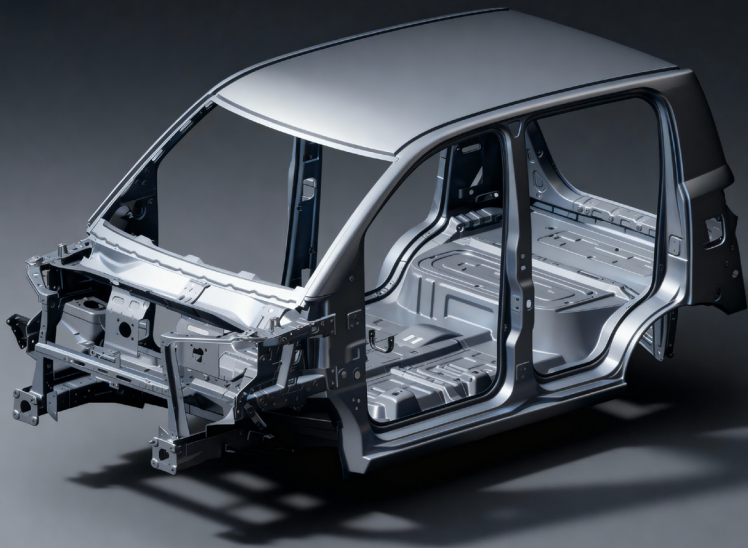
- Climbs hills with confidence, even fully loaded
- Strong acceleration and load-bearing capacity
- High decibel horn for accident avoidance (105–115 dB)



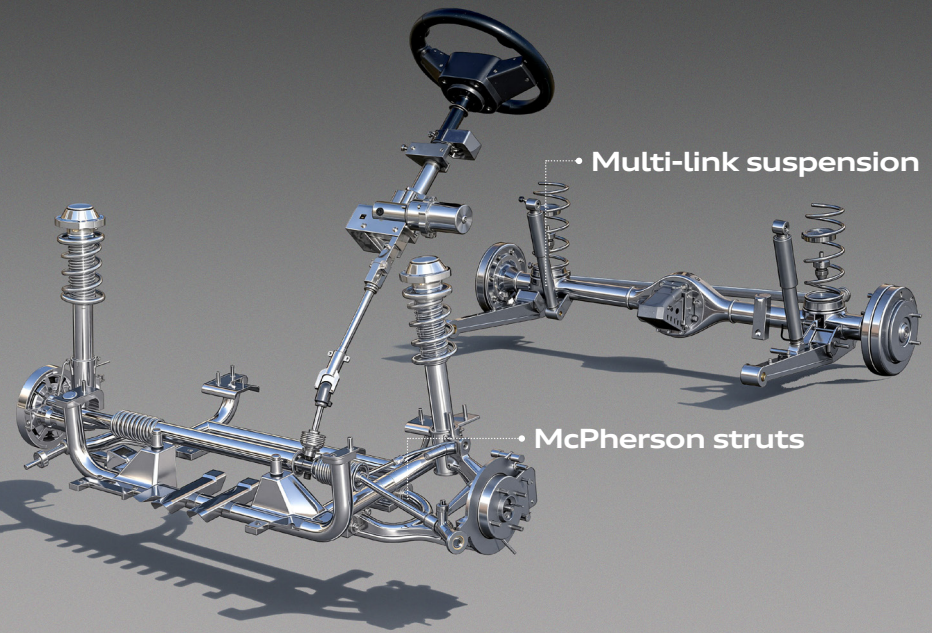
Structure & Safety



• Electronic & regenerative braking for 'one pedal' driving that extends brake pad life



High strength steel unibody integrated chassis design built to last **300,000 Kms**



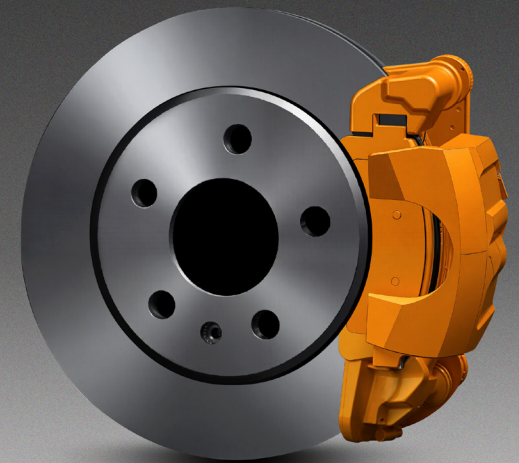
Dual suspension system - front MacPherson struts & rear trailing arm suspension for comfort



LED front & rear lighting with multiple external cameras



3-point seat belts for all seats



ABS braking, electronic handbrake and power brakes

Driver & Seat Comfort



- Available in left or right-hand drive
- Dual display screens - infomatic and touch screen



Elevated seating with wide-angle windshield for better visibility



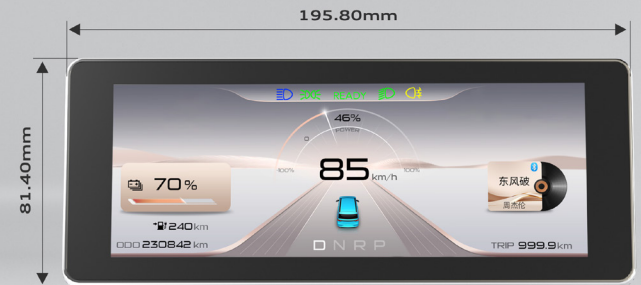
Built in adjustable phone holder

6 cup holders: 2 in center console, 4 in doors

Display and Central Touchscreen



- Seamlessly integrates navigation, entertainment, and app-based controls from your phone
- Infotainment screen integrates video recording capability for forward and reverse driving, as well as interior cabin
- The FM radio system is paired with 4 in-vehicle speakers, delivering clear and rich sound for

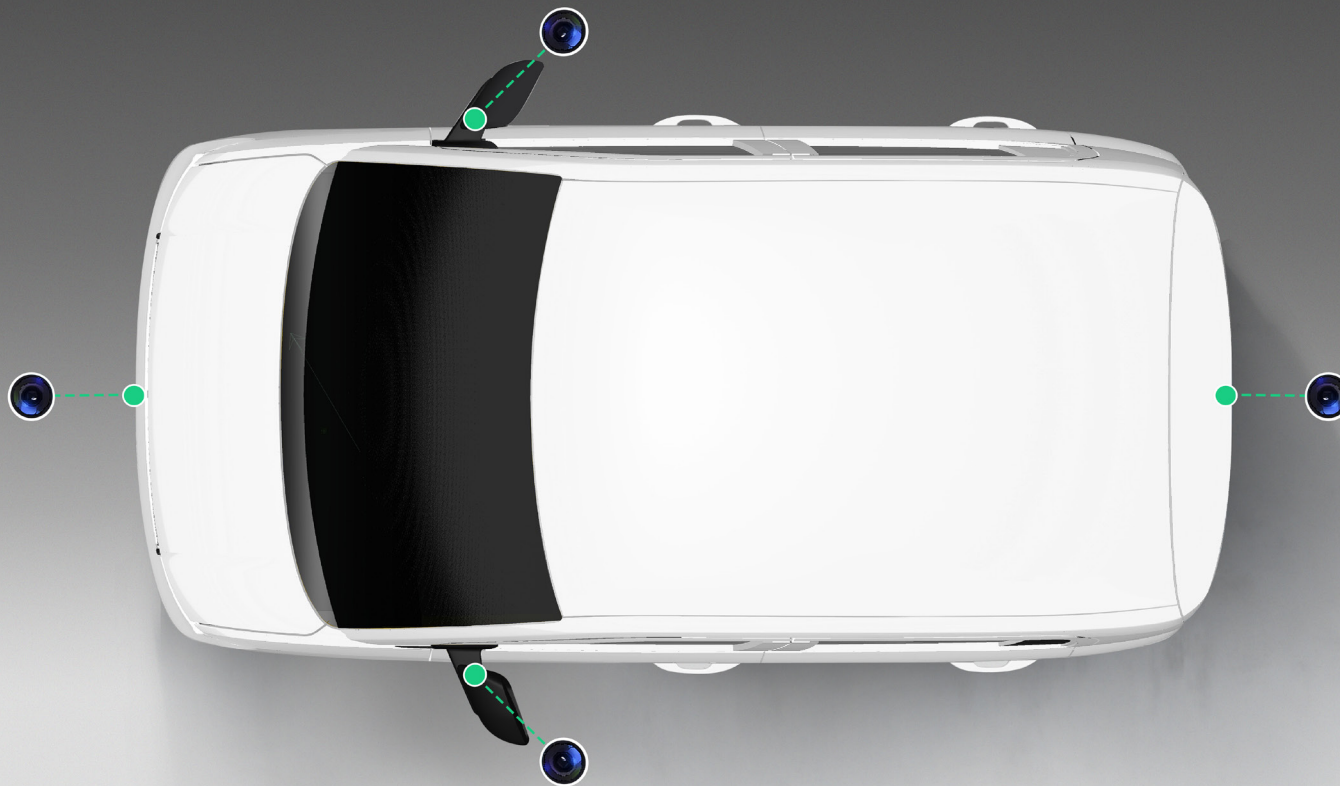


Digital display that supports cloud services, OTA updates, and remote diagnostics



Central smart touchscreen with smartphone screen mirroring support

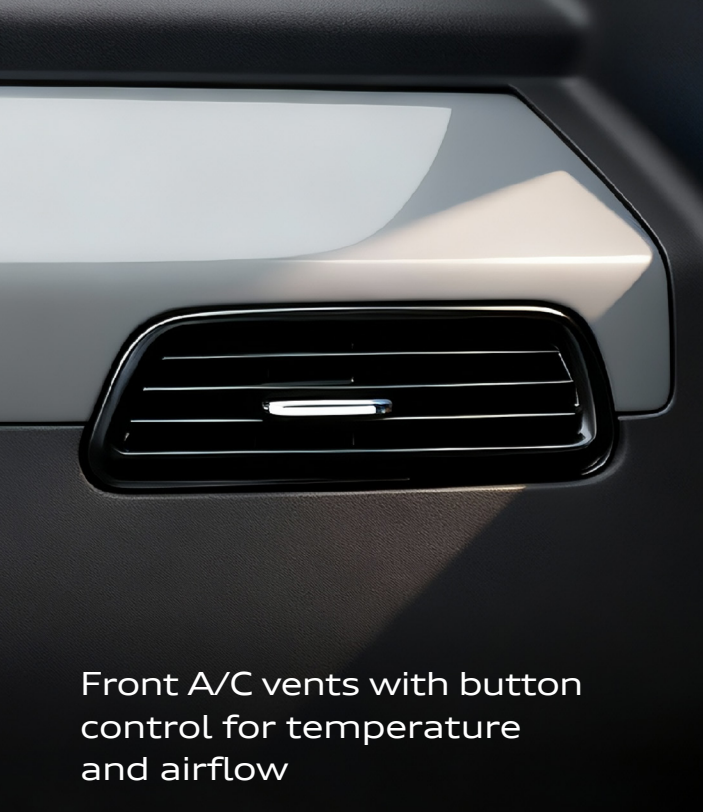
Multi-Camera Monitoring System



- 360 degree exterior camera system to monitor & record incidents
- Interior cabin-facing camera to monitor interior for safety & condition
- Automatic recording of detected incidents
- 30 day onboard memory storage of interior & exterior camera recordings

Passenger Comfort

- Ergonomic seating with wide armrests and smart storage
- Can comfortably accommodate 4 adults measuring 185 cm



Front A/C vents with button control for temperature and airflow



Multiple USB ports



Power windows



Sun visors and Reading lights



Ergonomic door handles



Overhead safety handle above the passenger doors

Luggage & Cargo Space



- Rear 50/50 split-folding seats allow flexible passenger and cargo configurations
- Up to 745L of storage space with rear seats folded - ideal for ride-hailing, or delivery



Supports roof-mounted luggage rack for extended storage,
enhancing practicality for long-distance travel or business operations

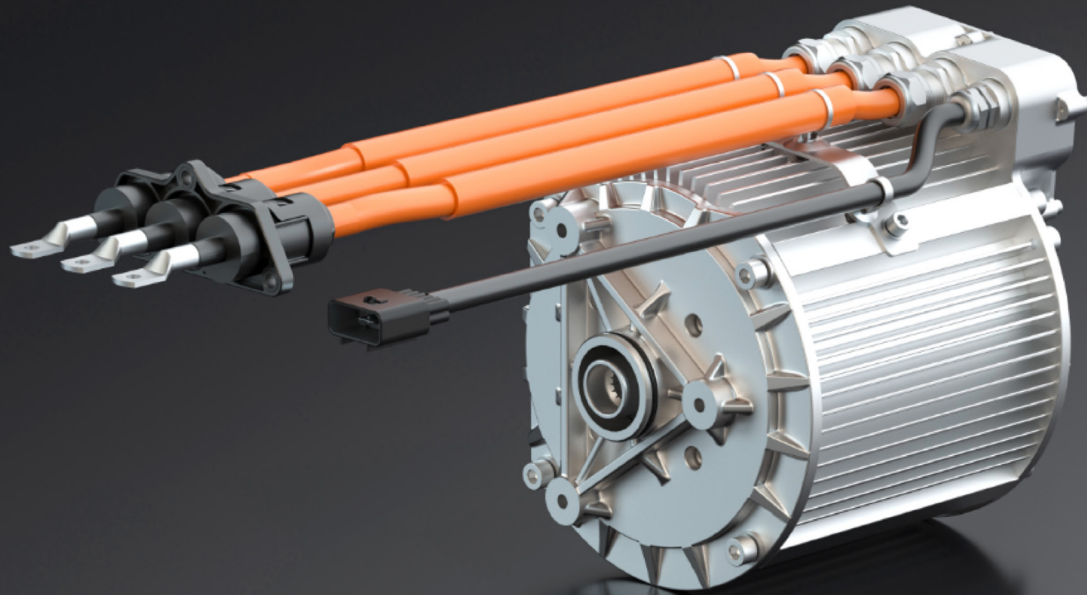
Built-In Battery Highlights

- Build for **800,000 Km** life (2500 charge /discharge cycles)
- 32Kwh capacity with intelligent BMS (Battery Management System)
- Drive **310 km** daily, only one charge needed
- **6+ years** intensive operation. Loan-friendly, drives past repayment



Motor Performance

- With a rated power of 10 kW and peak output of 23 kW (equivalent to approx. 31 hp), the motor delivers performance comparable to a 0.8L petrol engine
- High-efficiency permanent magnet synchronous motor
- Optimized for both flat and hilly urban environments
- Optimized for efficiency & heat management



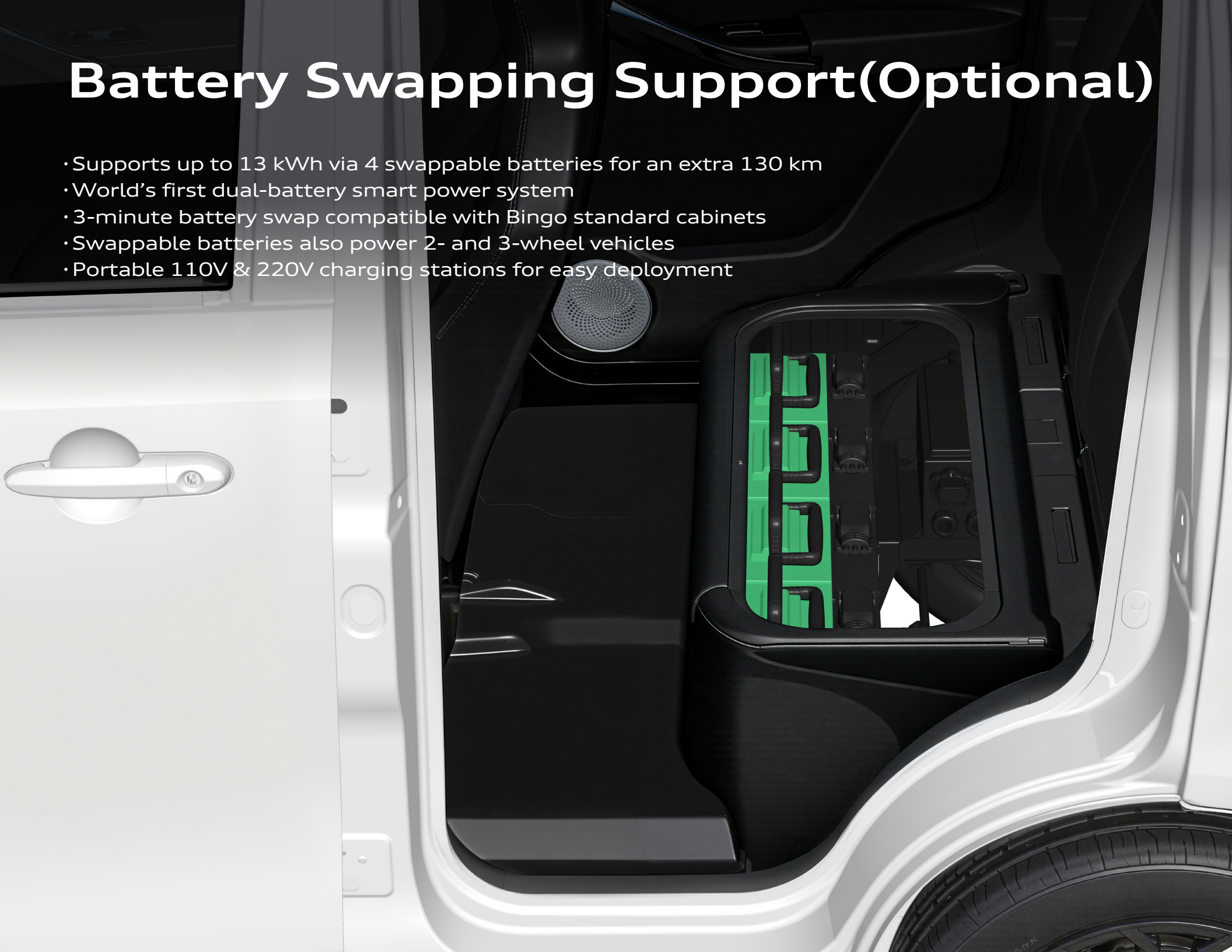
Charging Compatibility

- Supports fast DC charging (20-80% in ~1 hour)
- Supports AC Charging (20% to 80% in 6 hours)
- Compatible with residential, community, and public charging stations



Battery Swapping Support(Optional)

- Supports up to 13 kWh via 4 swappable batteries for an extra 130 km
- World's first dual-battery smart power system
- 3-minute battery swap compatible with Bingo standard cabinets
- Swappable batteries also power 2- and 3-wheel vehicles
- Portable 110V & 220V charging stations for easy deployment



Optional Accessories



Roof-mounted ad display or luggage rack



Optional 8kW inverter module can support wide range AC output of 110 to 240V rated 4000W, max peak 8000W output

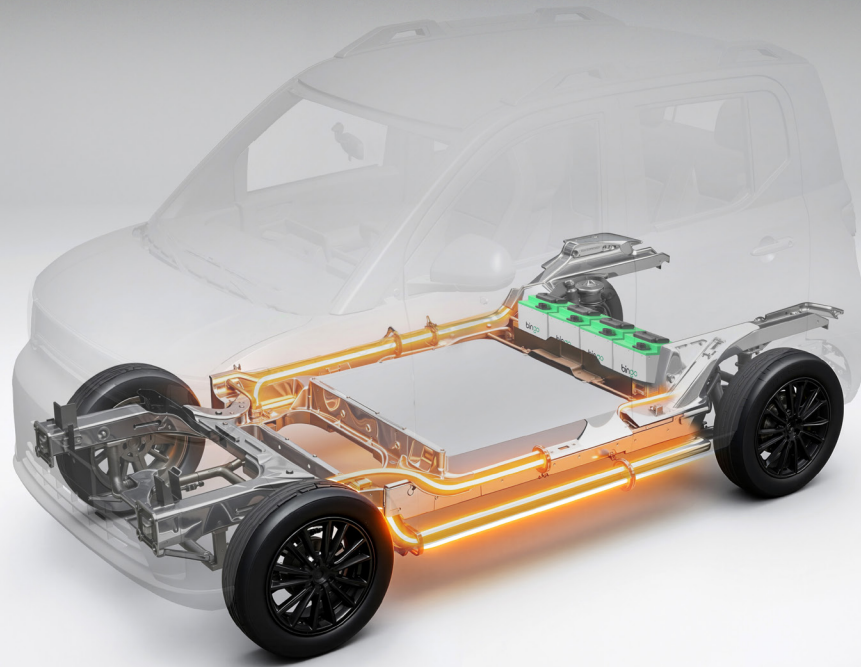


Optional 72V45Ah Swappable Batteries - each one weighs 13 Kg (up to 4 in use)



Kits for compliance with local regulations or industry requirements

Battery And Charging System



	72V404Ah	72V45Ah
Quantity	1 pc (fixed)	Max. 4 pcs
Battery Type	LFP	NCM Semi-Solid
Weight	230kg/pc	20kg/pc
Range	310km/pc	30-35km/pc
Mounting Method	Bolt-fixed modular battery under chassis	Under rear seat (swap cabinet)
Charging Mode	AC / DC charging	Swap Station / Charger
Charging Time	20-80% in ~1 hour (DC Charging)	3 hours
Swap Time	-	3 minutes

Key Performance And Configuration Details

Basic Parameters

Class	L7e Light EV
Dimensions (L×W×H)	3000*1500*1625mm
Wheelbase	2000mm
Wheel track	1300mm
Min. ground clearance	≥180mm
Seating capacity	4

Performance

0-40 km/h acceleration	6.0S
Max speed	90km/h (55mph)
CLTC Range (Only Main Battery)	> 350km (218 miles)
CLTC Range (Main Battery+4 Swap Battery)	> 500km (311 miles)
Standard charging time (Main Battery)	20-80% in ~1 hour

Wheels & Tires

Spec	155/50R14 (Standard), 165/55R13 (Optional)
Material	Aluminum alloy wheel

Power System

Motor type	Permanent magnet synchronous motor
Max power	23KW
Main Battery capacity	31.22kWh (77.28V404Ah*1)
Swap Battery capacity	Optional 12.96kWh (72V45Ah*4)
Battery cell type(Main)	LFP
Battery cell type(Swap)	NCM Semi Solid
Inverter	Optional peak 8 kW

Chassis / Brakes

Front wheel brake type	Disc
Rear wheel brake type	Drum
Regenerative braking system	Yes
ABS	Yes
Drive modes	D/N/S/R/P
Gradeability	≥25%

Comfort & Convenience Features

Smart key features (Optional)	<ul style="list-style-type: none">· Bluetooth Key· Mobile App· NFC Card· Physical backup key
USB charging ports	5V2A*3(USB-A+C)
Seat material	Fabric
Rear seat adjustment	50/50 split-folding
Air condition	Yes
Reading lights	Yes

Safety Features

Full car seat belts	Yes
Driver seat belt reminder	Yes
Door open reminder	Yes
Reverse radar	Yes
Driving recorder	Yes
Interior camera system	Yes
360° surround camera	Yes

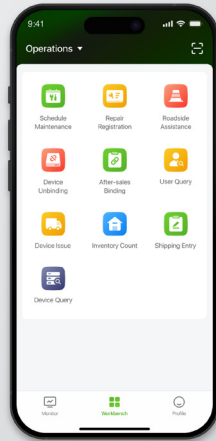
Interior and Exterior Features

Front/Rear combination lamp	Yes
Brake light	Yes
Daytime running lights	Yes
Side turn signals	Yes
Front/Rear fog lights	Yes
Hazard lights	Yes
Rear reflector	Yes
License plate light	Yes
High-mounted brake light	Yes
Roof rack	Yes
Roof storage basket	Optional

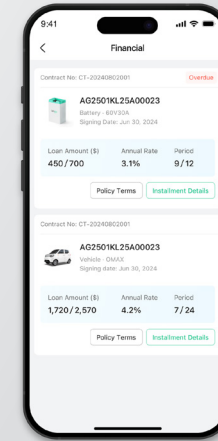
Interior and Exterior Features

GPS positioning	Yes
LCD instrument cluster	6.86"
Multimedia screen	10.33"
Remote control	Platform/APP
Vehicle data reporting platform	Yes

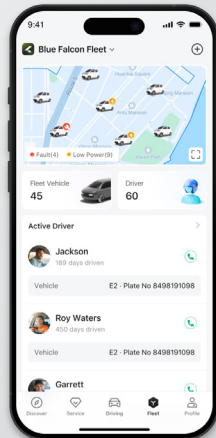
Bingo Remote Fleet Management Platform



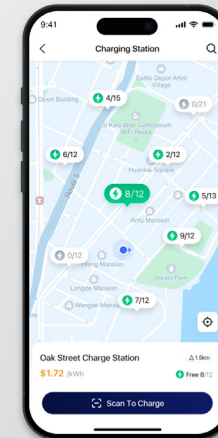
Mobile-first architecture



Mobile financial payment capability

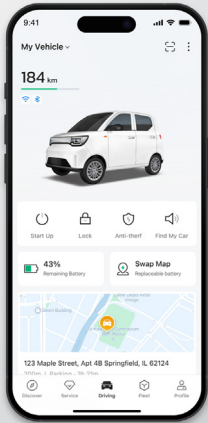


Ability for vehicle owners to create & manage micro-fleets of other drivers

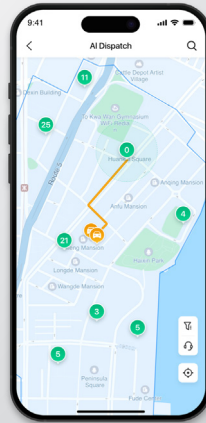


Locate and navigate to charging stations

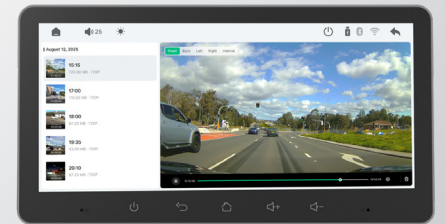
Bingo Remote Fleet Management Platform



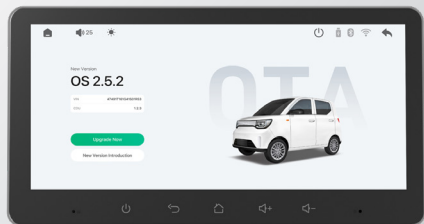
User app with vehicle control, notifications, diagnostics



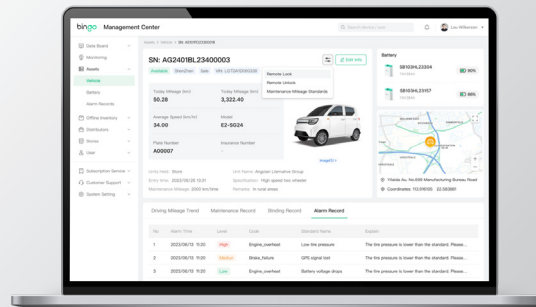
AI-based route planning and dispatch



Proactive diagnostics and maintenance



OTA updates, fault alerts



Remote unlock, lock, and data monitoring are supported



Backend fleet control with geofencing and multi-vehicle management

Sports Edition

- Custom paint finish with racing stripes
- Front metal bull bar with fog lights
- 14" alloy rims



Models available based on sufficient demand

Adventure Edition

- Roof mounted luggage rack & light bar
- Front metal bull bar with fog lights
- Rear mounted spare tire



Models available based on sufficient demand

Touring Edition

- Premium indoor finishes & accents
- Premium digital entertainment console
- 14" alloy rims



Models available based on sufficient demand





Models available based on sufficient demand



bingo